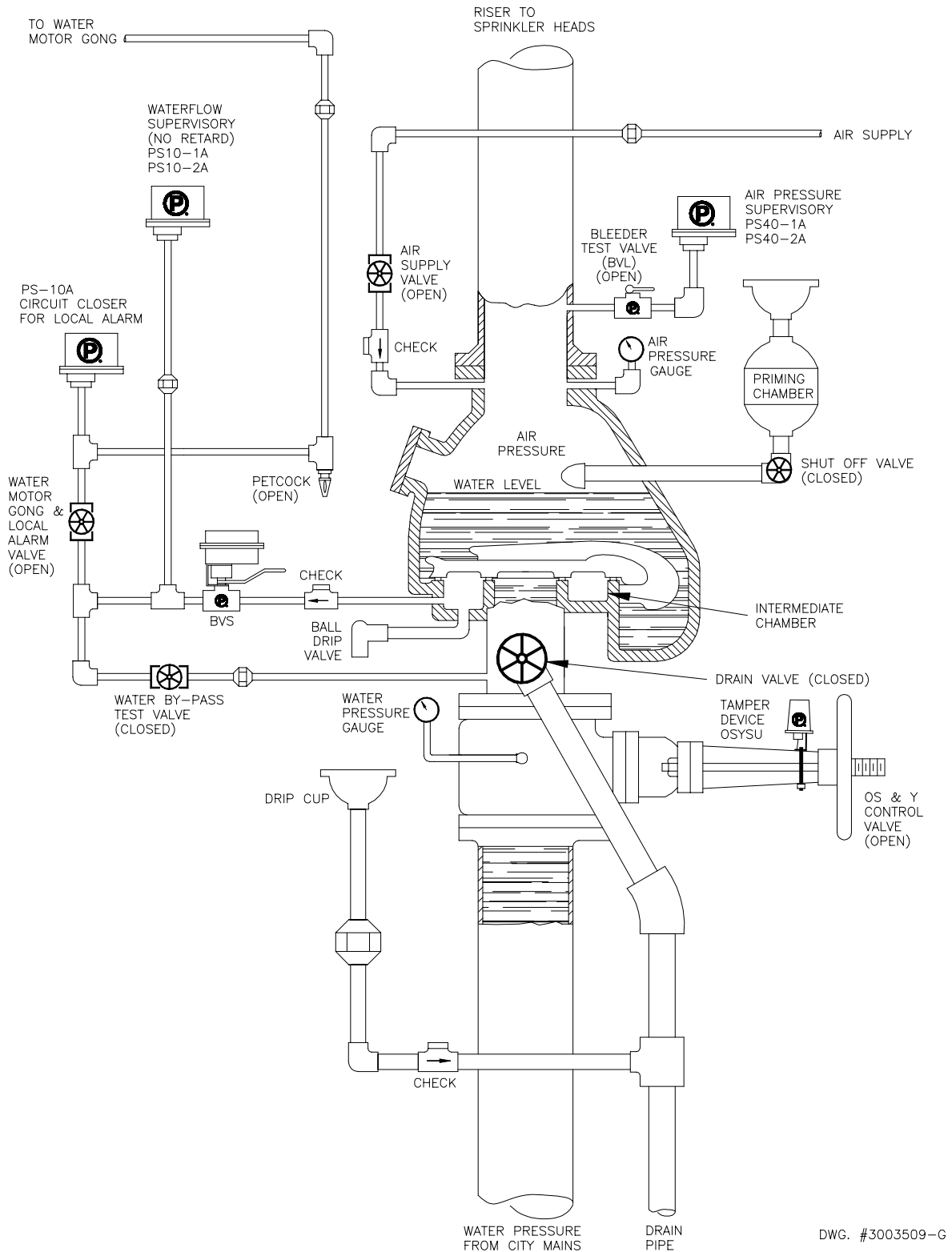


DRY PIPE VALVE SYSTEM WATERFLOW ALARM INSTALLATION

FIG. 4



DWG. #3003509-G

NOTE;
UNLESS EXCESS PRESSURE IS PUMPED INTO SYSTEM, THE WATERFLOW DEVICE SHOULD HAVE A RETARD. PER NFPA 72, THERE SHALL BE NO SHUT OFF VALVE IN LINE TO A PRESSURE TYPE WATERFLOW SWITCH, UNLESS THE SHUT OFF IS ELECTRICALLY SUPERVISED. POTTER MODEL BVS, BALL VALVE WITH TAMPER SWITCH.